

A History of a Small Place

Written by Rev. Dr. Alan Baughcum



The Glory Days

1765-1850

Hard Times

1850-1950

Renewal

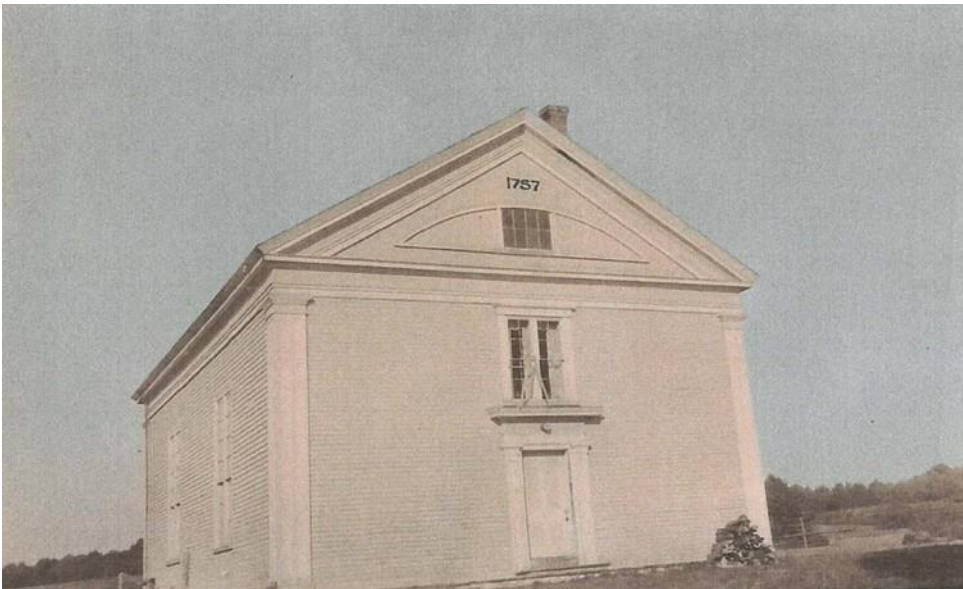
Post 1950



The Glory Days

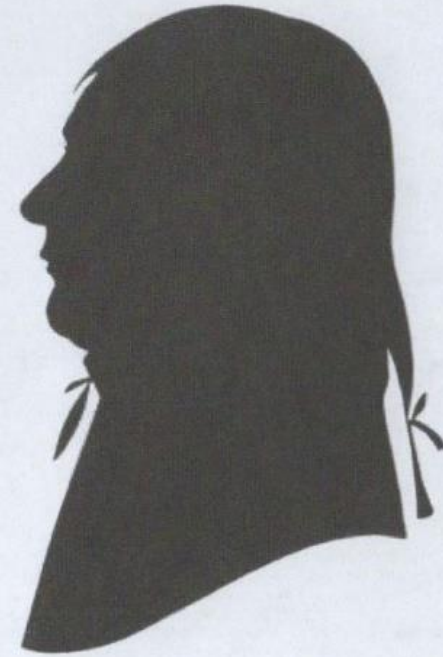
1765 - 1850





**NEQUASSET
CONGREGATIONAL
CHURCH
1757**





HONORABLE PELEG TALLMAN AND WIFE, ELEANOR (CLARKE) TALLMAN





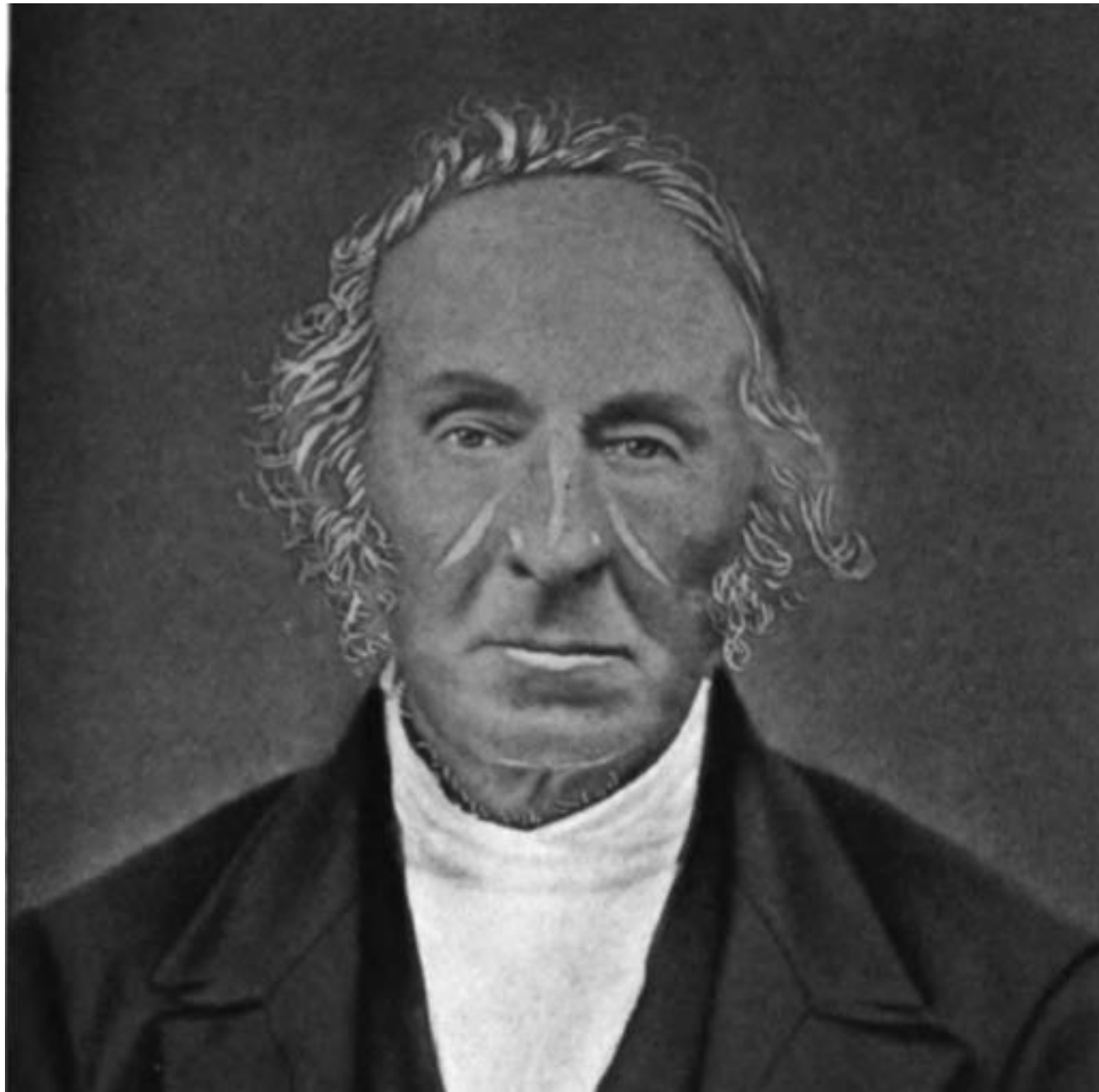
MRS. ELEANOR (CLARKE) TALLMAN





DAY'S FERRY CONGREGATIONAL CHURCH PARSONAGE (on left)
1939





REV. JONATHAN ADAMS
1816 - 1831



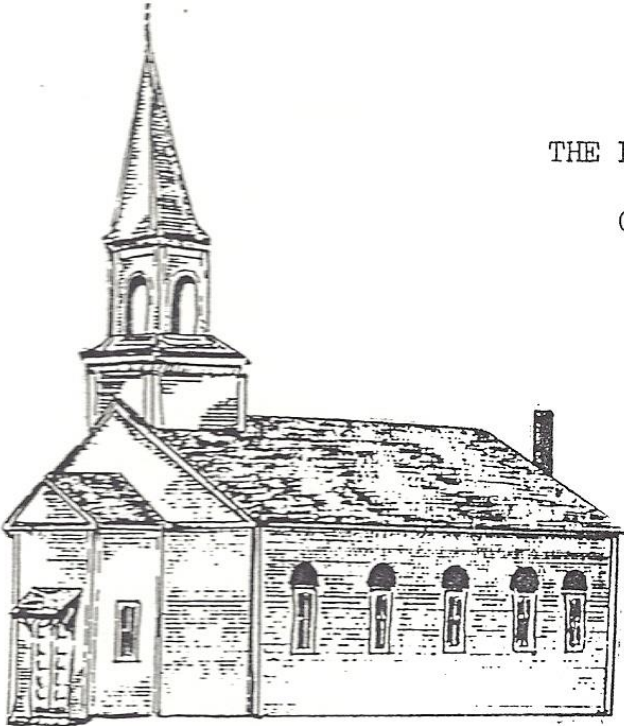
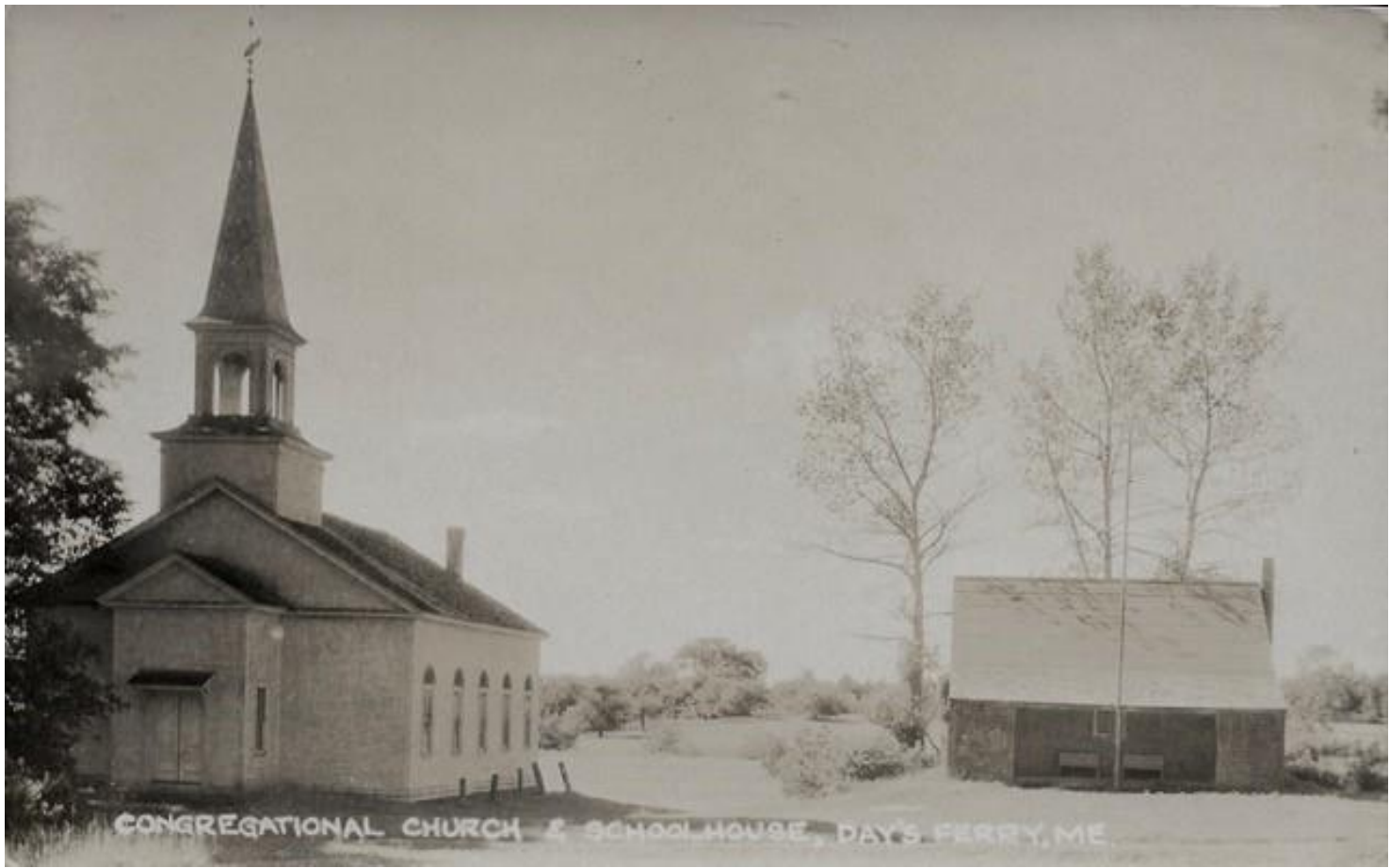


Day's Ferry Church
As It Looked From
1834-1890

W 200	J Perkins	J A Day	Franklin Church	J. Perkins		J. Thwing	C. J. Allen	J. Thwing	Mrs. May Stinson	John Stinson	
L 23	24	25	26	27		28	29	30	31	32	
Franklin Church	John Gelmore	J Carter	J B Stinson	Lem Preble	J P Trott	Frank Trott	Lydia Curtis	Wm Hodgkins	C. Buck	Berry Trott	Free
21	19	17	15	12	11	9	7	5	3	2	
22	20	18	16	14	12	10	8	6	4	1	
Meriden	Mrs C. Reed & Athorn	John Toller Church	J. Thwing	H Preble & E L Carter	C Buck	D. Athorn	John Potter	J. Whittier	J. Mair	John Stinson	
J B Thwing	J P Trott	H Curtis	P Grover & J. D. Stone	Gordon Preble	John Curtis	J. B Thwing	J. Carlton	W. B. Trott	S. Perkins Church	Free	
34	36	38	40	42	44	46	48	50	52	54	
33	35	37	39	41	43	45	47	49	51	53	
John Thwing	Eph. Carlton	J A Stinson	H Preble	J H Stullerton	S Wadge	Albert Trott	D & Percy	Thurston Lane Church	Capt Cass Church	Samuel Reed	

Copy of Mr. Thayer's draft of Cong. Church at Day's Ferry before remodeling in 1890

Copy of Mr. Thayer's draft of Cong. Church at Day's Ferry before remodeling in 1890



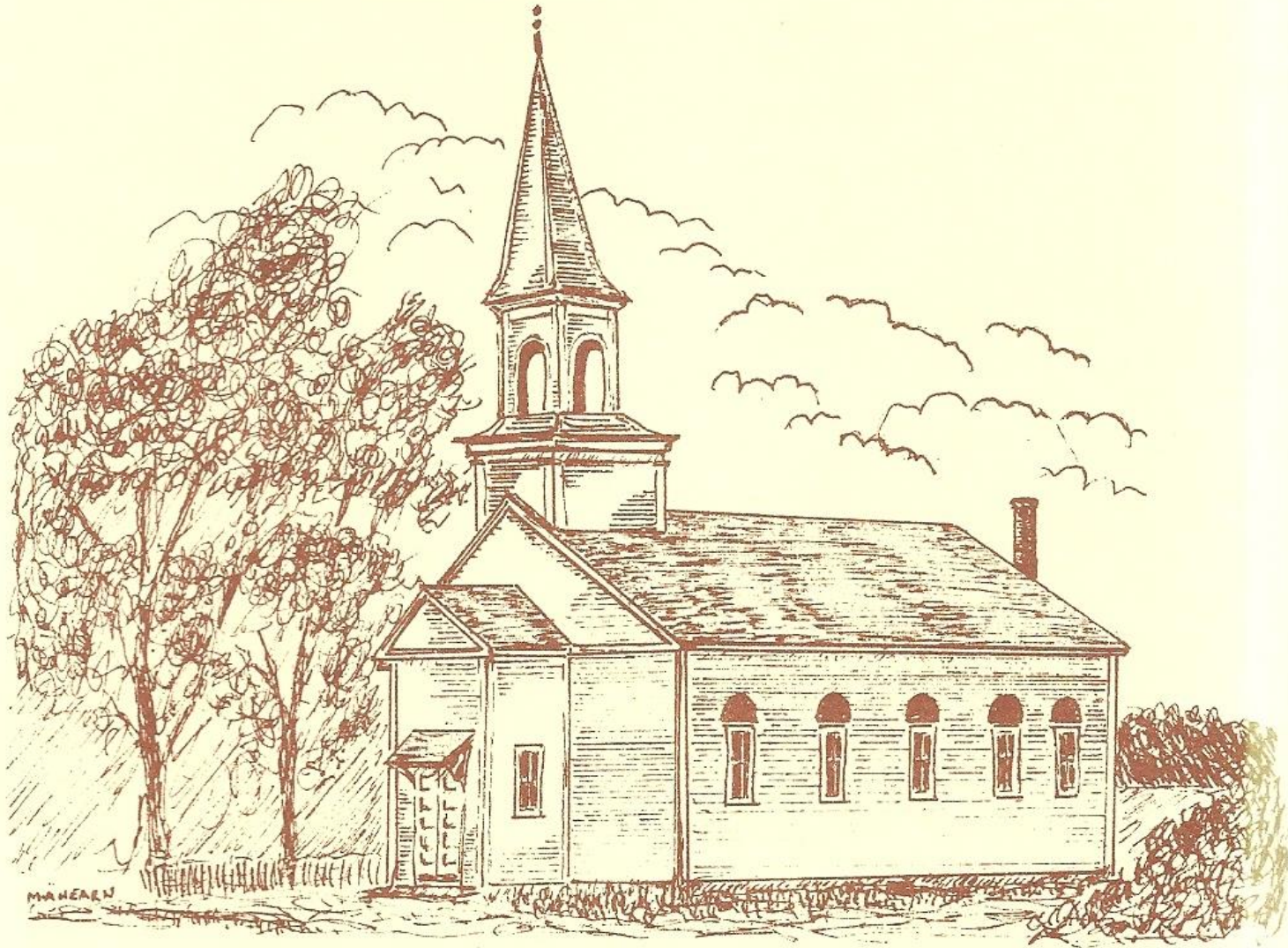
THE DAYS FERRY
CONGREGATIONAL
CHURCH



Woolwich, Maine

REV. JOTHAM SEWALL, JR.
1847 - 1851

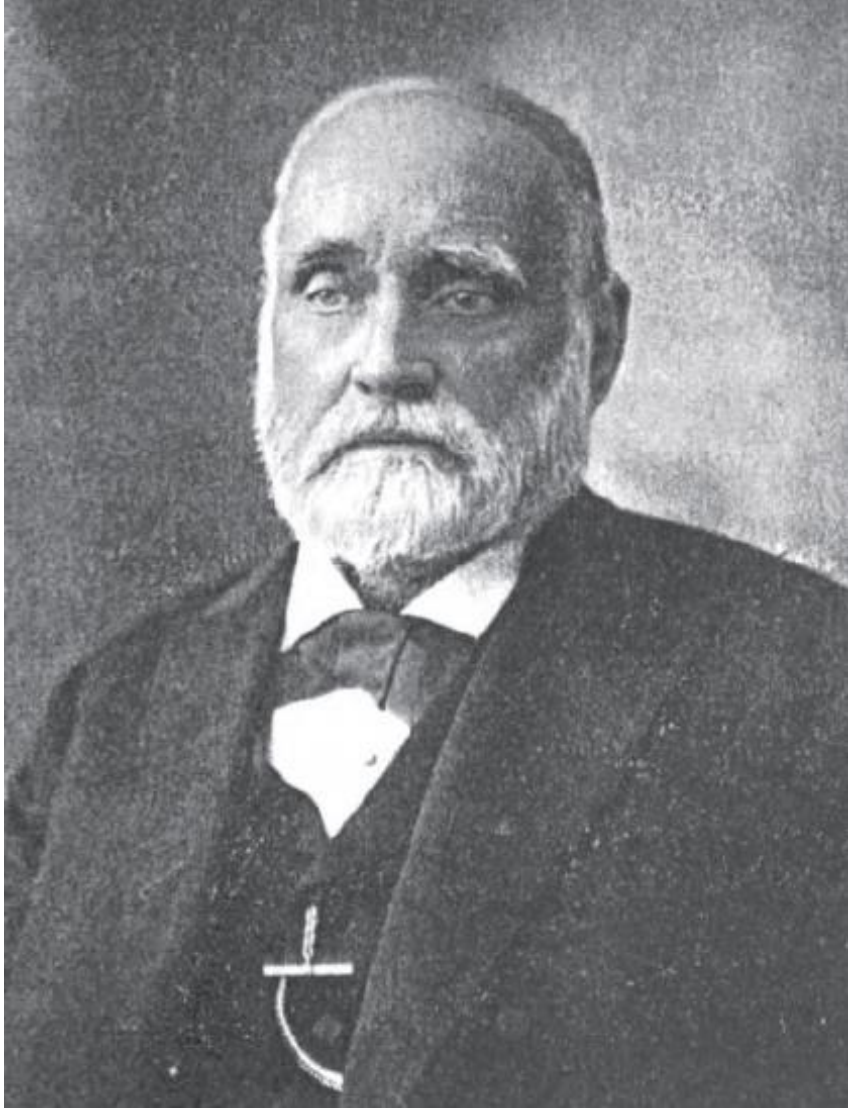




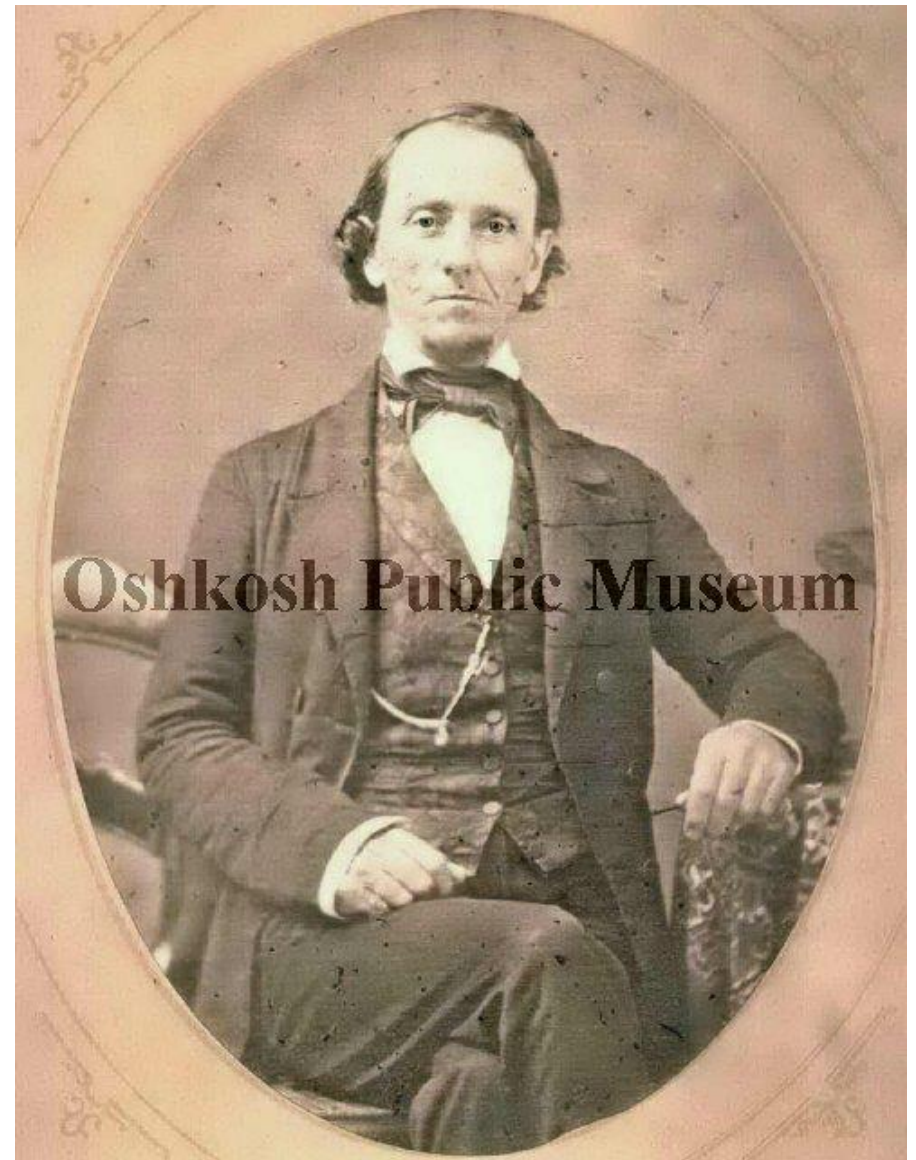
Day's Ferry Congregational Church

HARD TIMES 1850 - 1950





REV. CHARLES BAKER SMITH
1852 - 1854



REV. THOMAS N. LORD



REV. HENRY O. THAYER
1867 - 1889





REV. SAMUEL CHAPIN
1892 - 1897

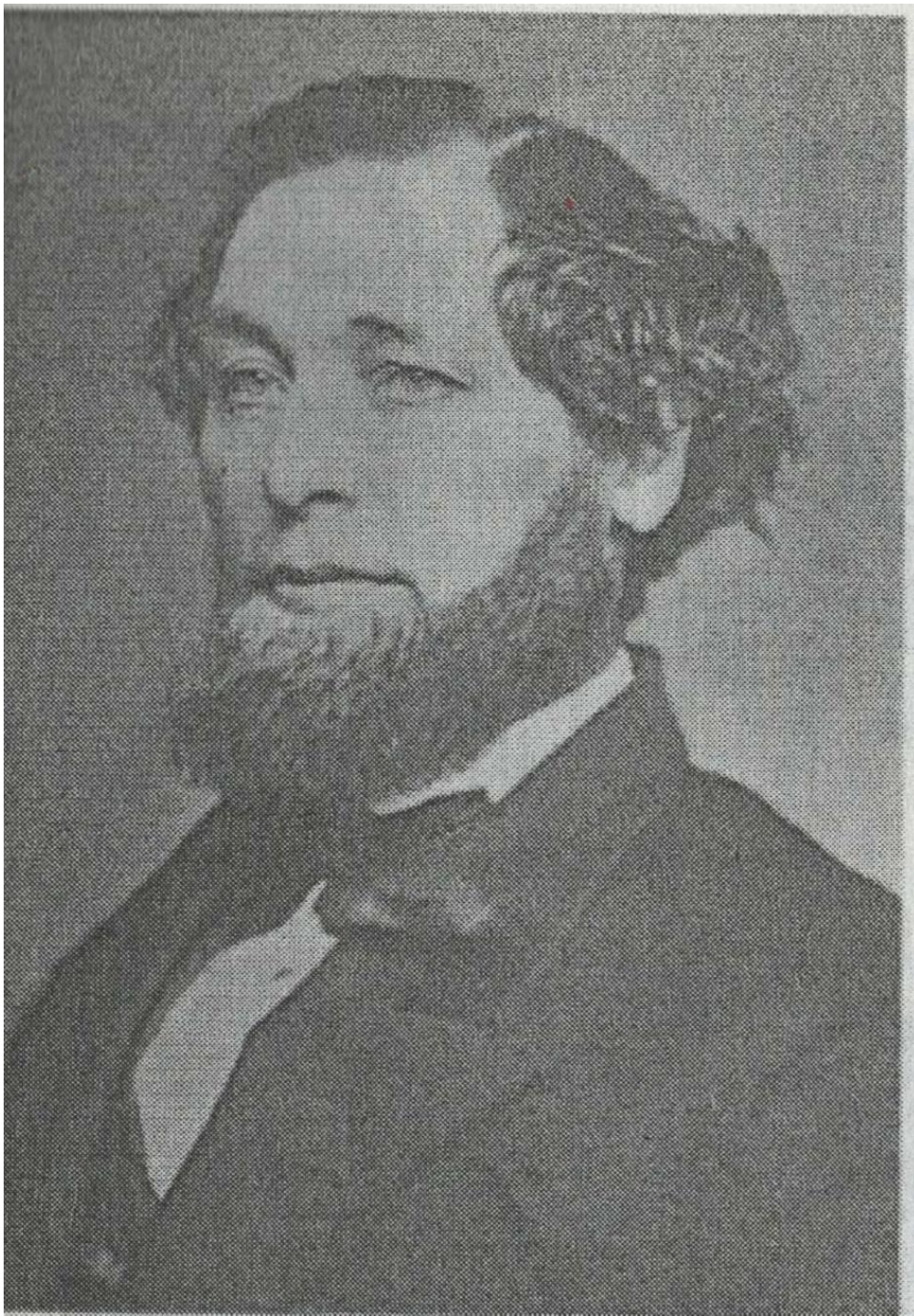




REV. HENRY PERKINS
at Middlebury College
1897 - 1898



REV. JUSTIN PERKINS
Photo from 1829



JONATHAN E. ADAMS
1859, AT TIME OF ORDINATION





REV. JOHN EDWARD NEWTON AND WIFE
1903 - 1905



REV. WILLIAM CALDER
1913 - 1917





REV. OSWALD RANKIN
1927 - 1928

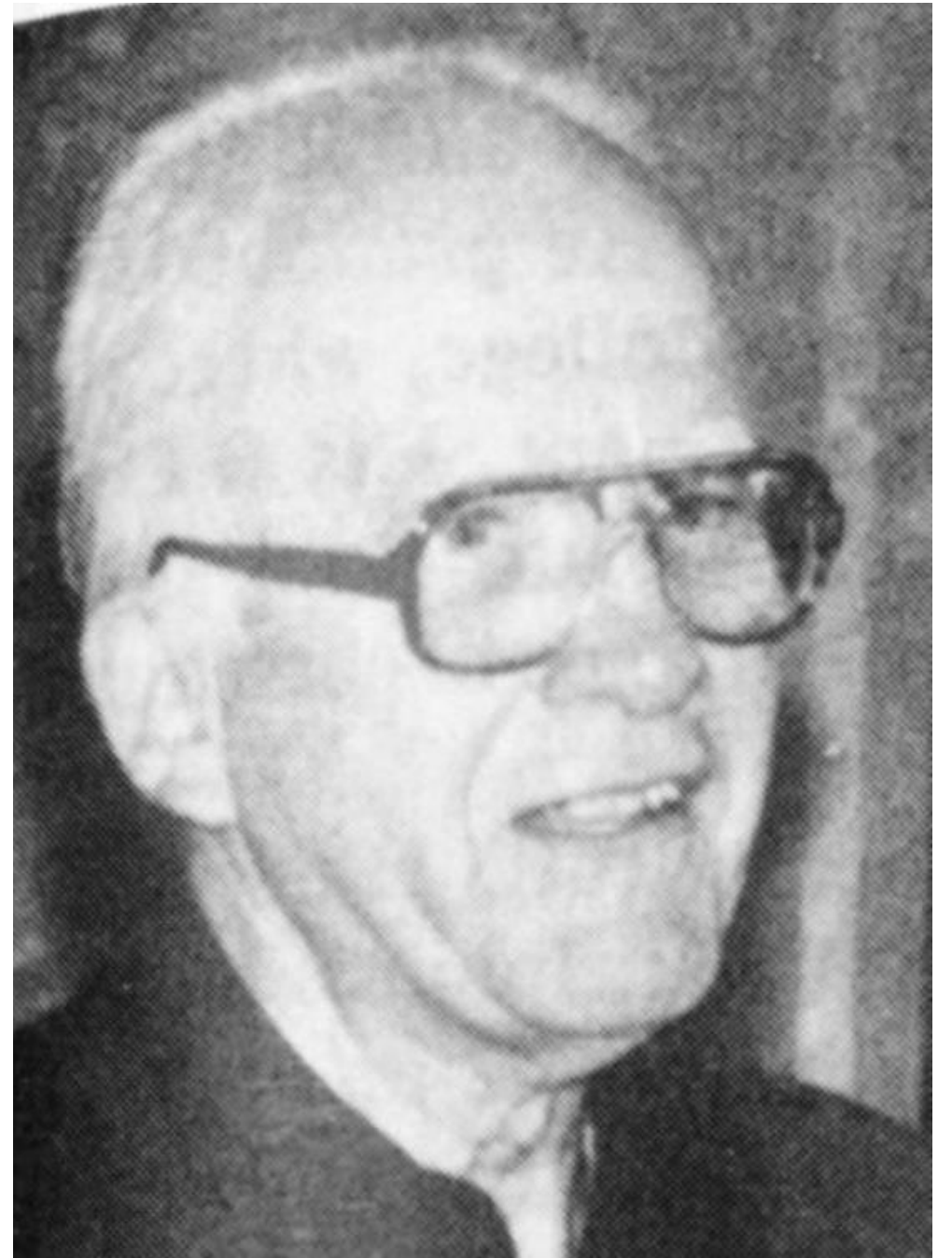




REV. WALTER SWANK
1933 - 1936



REV. WILLARD J. RAND, JR.
1936 - 1937





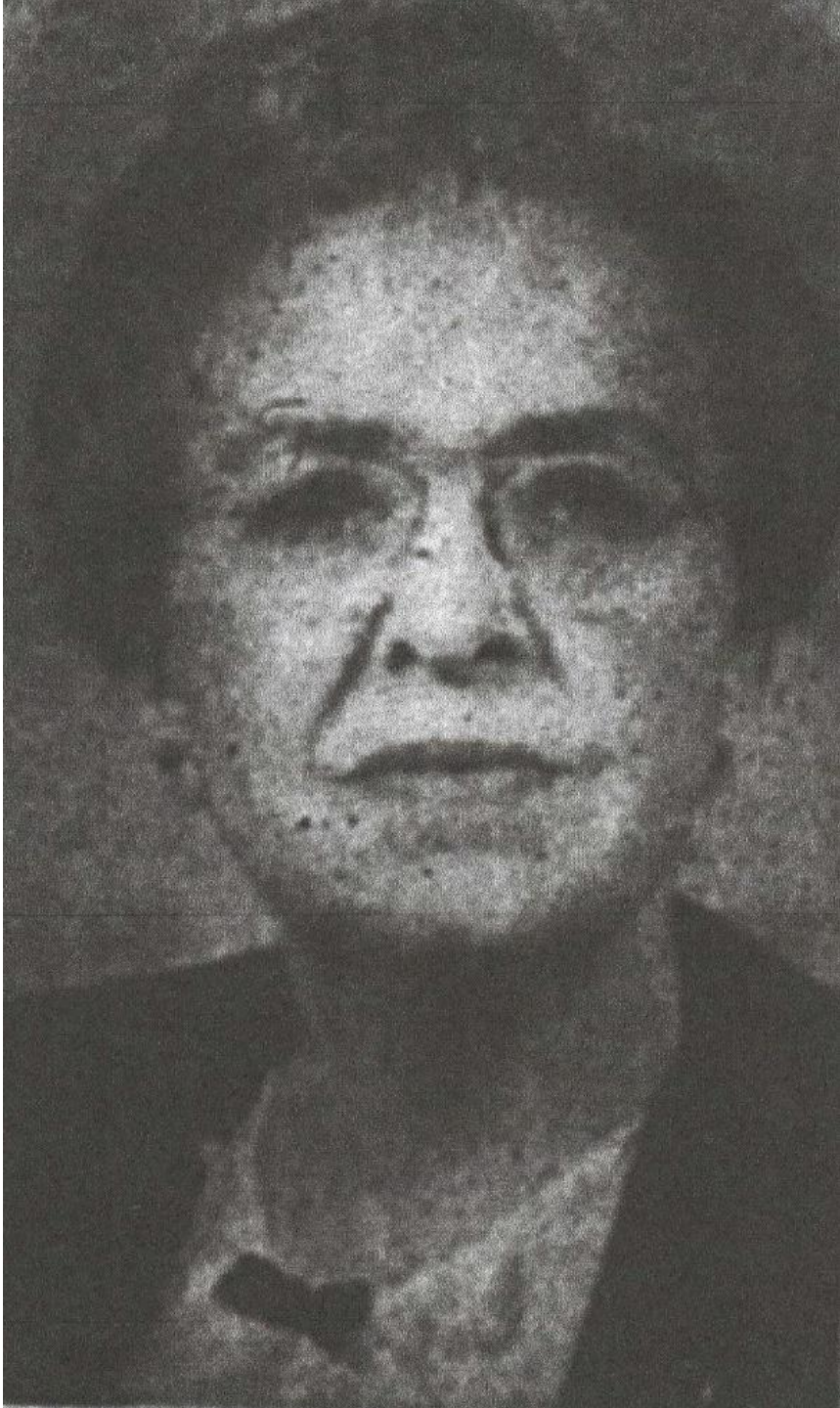
REV. CHARLES T. BROWN (1937 – 1941) AT
DAY'S FERRY CONGREGATIONAL CHURCH IN 1939



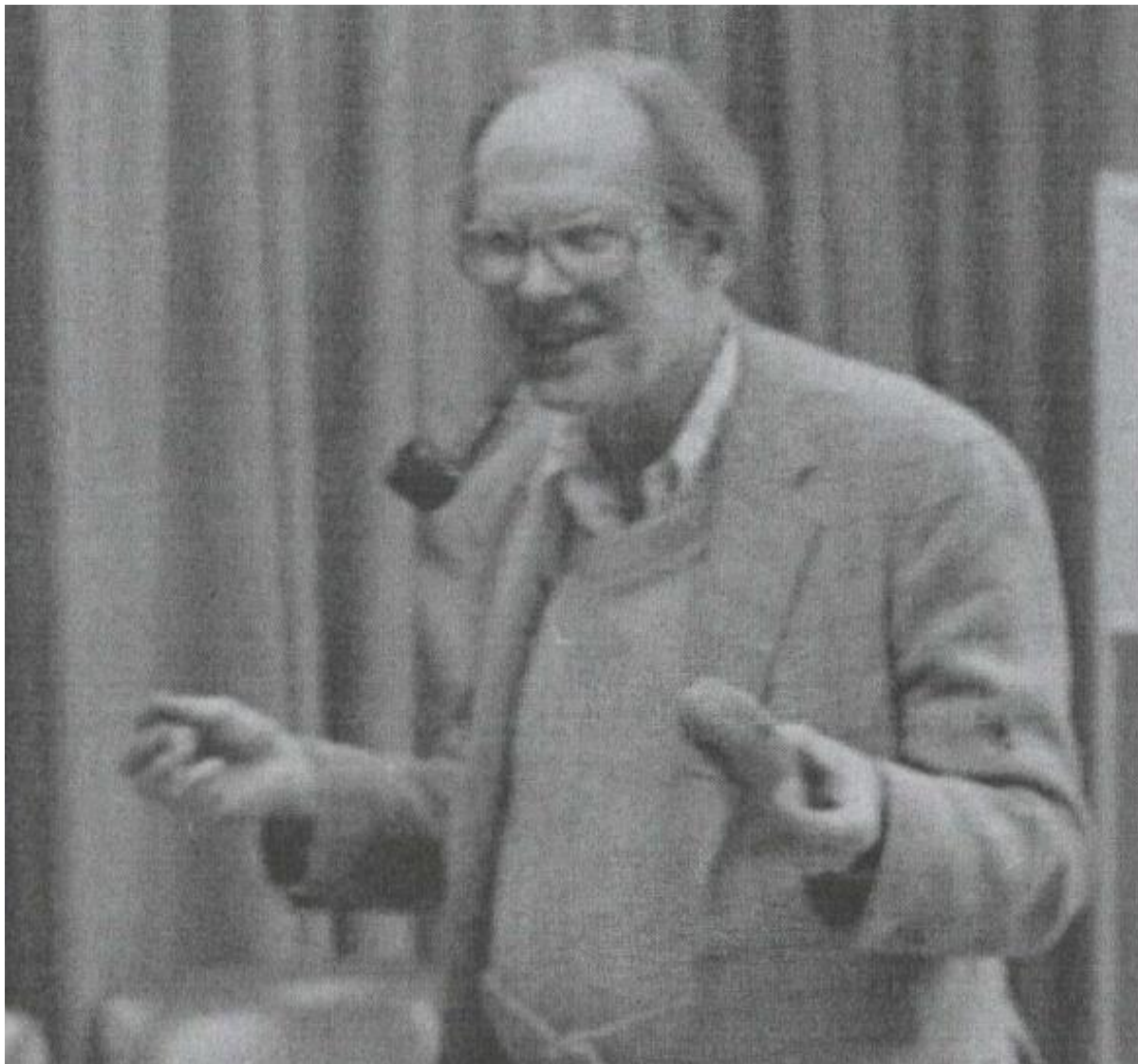
PORTRAIT OF REV. CHARLES T. BROWN
IN BROWN HALL OF ELM ST. CHURCH IN BUCKSPORT, MAINE

REV. HERBERT F. MILLIGAN
1941 - 1942





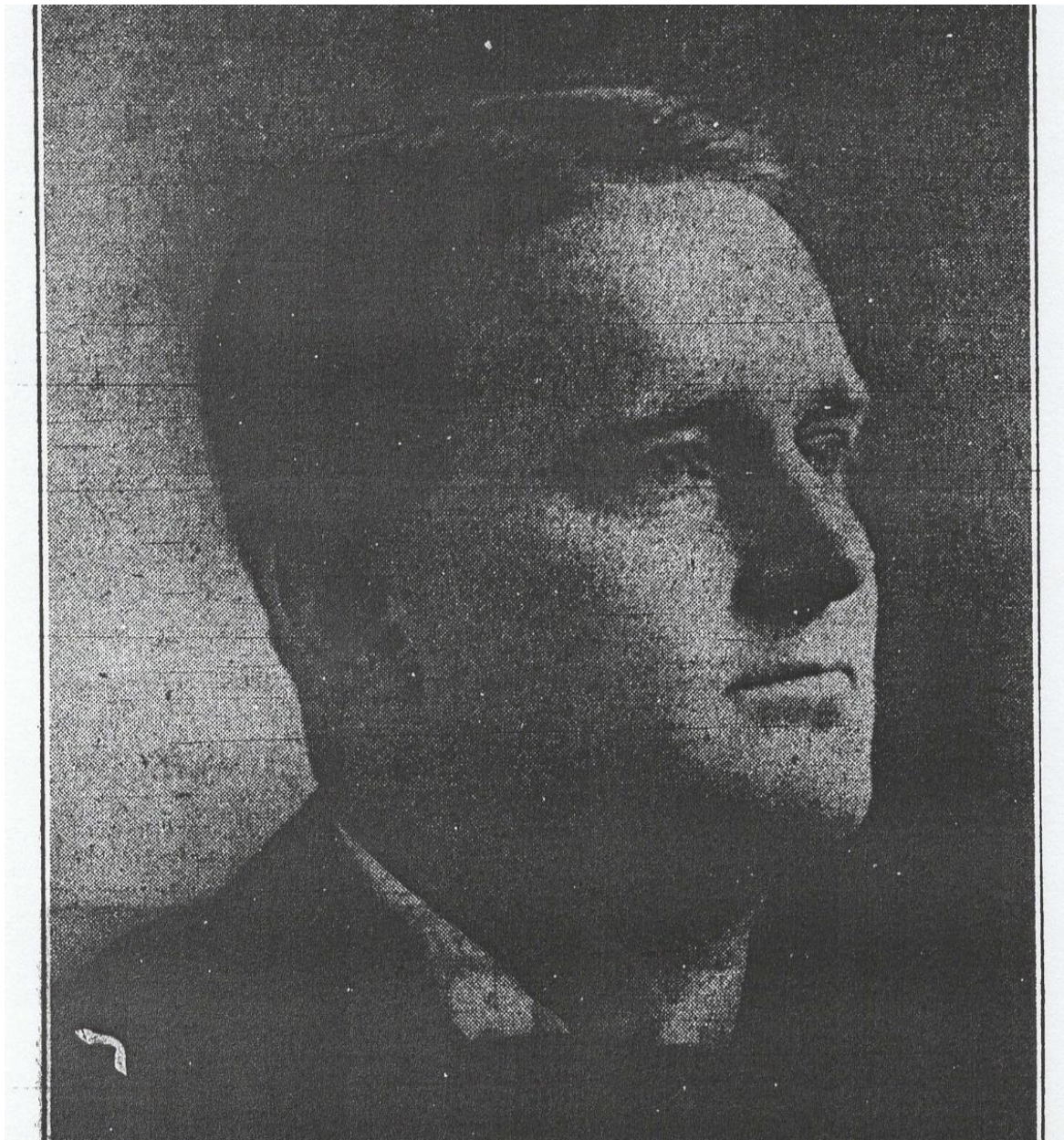
REV. MABELLE TRACEY
1942



REV. LOWELL MILLIKEN
1943 - 1948

RENEWAL - POST 1950

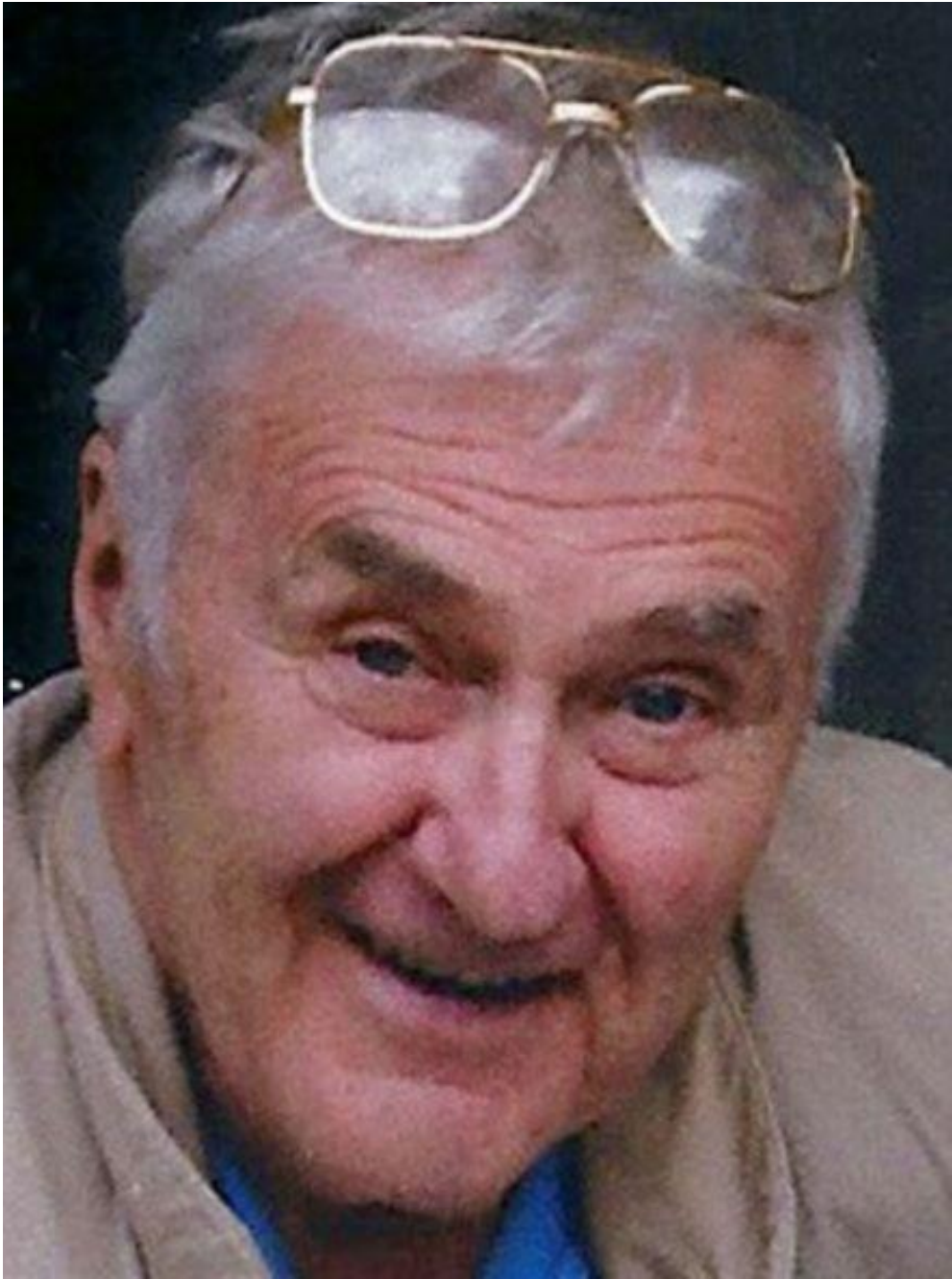




FRANK WALKER



REV. JOHN F. ANDERSON
1948 - 1951



REV. RONALD ASHWORTH
1959 - 1960



REV. MARTIN PERRY
1960 - 1964



REV. SHANE ESTES (1964 – 1967)
AND ROBERTA (“ROBIN”) ESTES

REV. EVELYN BIGNELL
1967 - 1969





PETER WILLARD
1969 – 1971 & 1976 – 1978
WITH HIS WIFE, JEAN



FRANK HAYWARD
1971 – 1976 & 1978 - 1983



REV. JOHN RATLIFF
1984 - 1985



REV. STANLEY JOHNSON
1987 - 2003

REV. ROBERT DORR
2003 - 2004
IN THE PULPIT





REV. DR. JILL SMALL
2004 - 2010



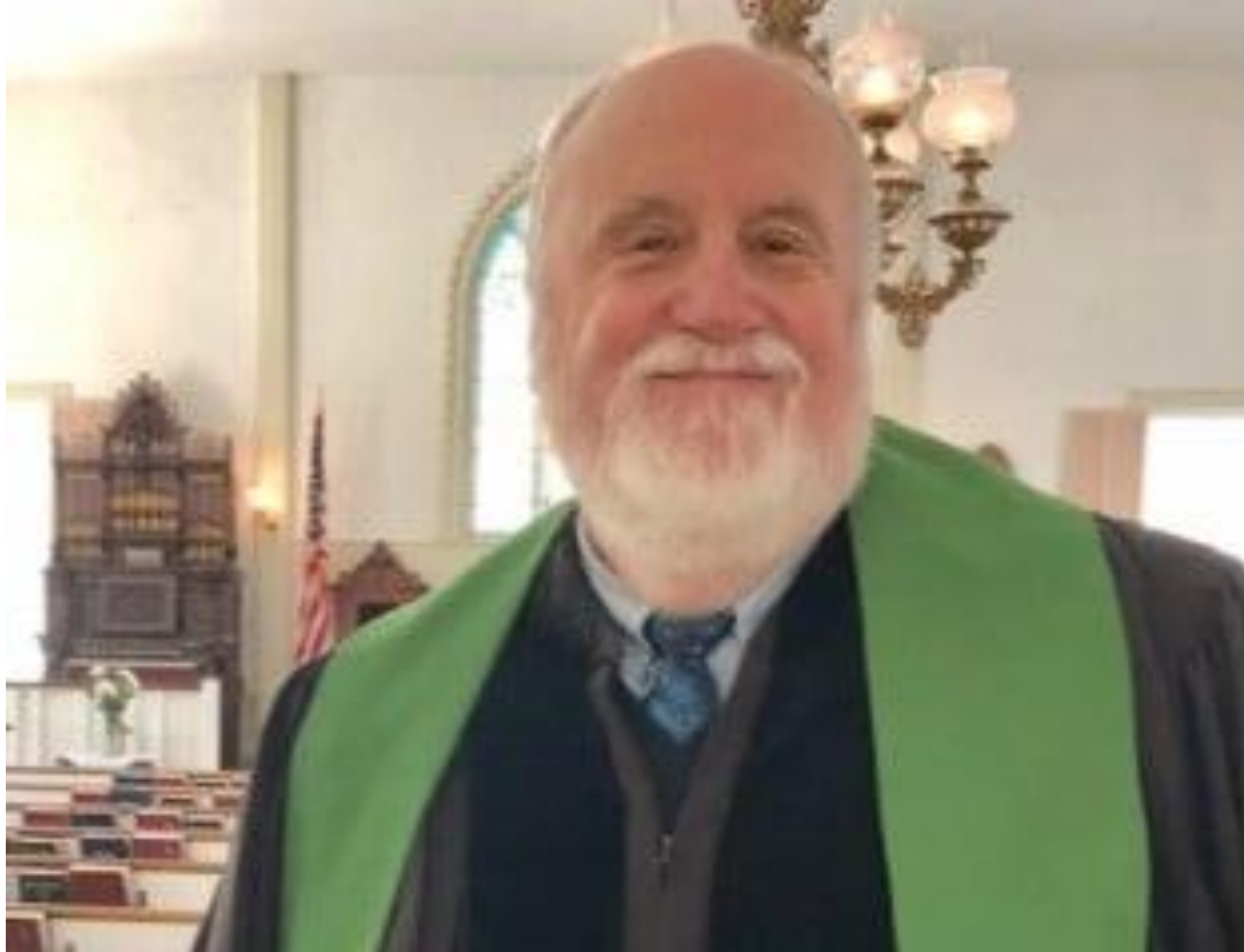
REV. BRICKER GIBSON
2010 - 2011



REV. DR. ALAN BAUGCUM
2011 - 2018

REV. JIM HENRY
2018 - 2020





REV. DAVID BUTLER
2020 - 2022



Rev. Lucia A. Jackson
2022 -



